

# TIGER 352

The manual circular sawing machine for the cut of tubes and profiles and characterized by its unique simplicity and flexibility of use



□ **MANUAL SAW**

□ **CIRCULAR BLADE**

□ **CUTTING FROM -45 ° TO +60°**

IT IS ALSO AVAILABLE WITH PNEUMATIC VICE VERSION:

- By assembling the optional Pneumatic Vice (MA), the opening/closing of the pneumatic vice is performed by means of hand operated valve.

## CUTTING RANGE

	○	□	▭	■	▬
0° / mm	115	95	180 x 95	90	-
+45° / mm	110	95	125 x 95	-	64 x 90
+60° / mm	90	80	90 x 95	-	45 x 90
- 45° / mm	110	95	125 x 95	-	64 x 90

Max. open vice                      190 mm

## PERFORMANCE CHARACTERISTICS

Blade size                              HSS - 350 x 32 x 2.5 mm

Blade speed                            15/30/45/90 rpm

Blade motor                            1.8 / 2.6 Kw

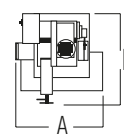
Capacity of coolant tank            20 L

Total input power                    3.1 Kw

## WEIGHT AND DIMENSIONS

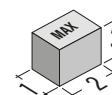
Height of working table            940 mm

Weight                                    375 kg



A = 960 mm

B = 1040 mm



1 = 940 mm

2 = 1000 mm

3 = 1870 mm