

# SHARK 332-1 CCS

The manual sawing machine with double cutting angle performing single cuts even without operator



□ **MANUAL SAW**

□ **BAND BLADE**

□ **FOR +60° CUTTING**

□ **CCS (CUTTING CONTROL SYSTEM):**

The CCS device allows to perform single cuts without operator intervention by using the operating head weight controlled by a spring and hydraulic brake.

## CUTTING RANGE

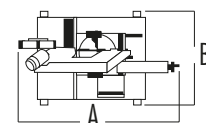
	●	■	■
0° / mm	300	250	330 x 250
+45° / mm	260	250	260 x 200
+60° / mm	180	170	170 x 170
- 45° / mm	240	210	240 x 160
Max. open vice	335 mm		

## PERFORMANCE CHARACTERISTICS

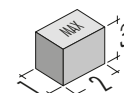
Blade size	3650 x 27 x 0.9 mm
Blade speed	40 / 80 m/min
Blade motor	1.5 / 1.8 Kw
Capacity of coolant tank	80 L
Total input power	2 Kw

## WEIGHT AND DIMENSIONS

Height of working table	870 mm
Weight	640 kg



A = 2155 mm  
B = 1210 mm



1 = 1300 mm  
2 = 2200 mm  
3 = 1950 mm