

PH 211-1

ENTRY LEVEL manual band sawing machine to cut metal tubes and profiles with an extra gear



□ **MANUAL SAW**

□ **BAND BLADE**

□ **FOR +60° CUTTING**

IT IS ALSO AVAILABLE IN THE HB VERSION:

- The HB device allows to perform single cuts without operator intervention by using the operating head weight controlled by an hydraulic circuit and valve.

- The HB device can be provided as a KIT to install in already manufactured machines.

- HB device is available only in three-phase version.

CUTTING RANGE

	○	□	▭
0° / mm	180	180	200 x 150
+45° / mm	115	110	125 x 110
+60° / mm	70	70	70 x 70
Max. open vice	218 mm		

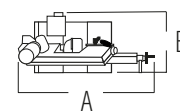
PERFORMANCE CHARACTERISTICS

Blade size	2130 x 20 x 0.9 mm	
Blade speed	40 - 80 m/min - 2 speeds	80 m/min - 1 speed
Blade motor	0.70 / 0.81 Kw - Three phase	1.25 Kw - Single phase
Capacity of coolant tank	10 L	
Total input power	0.91 Kw	0.91 Kw

WEIGHT AND DIMENSIONS

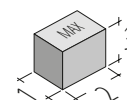
Height of working table 935 mm

Weight 190 Kg



A = 1510 mm

B = 645 mm



1 = 800 mm

2 = 1400 mm

3 = 1650 mm